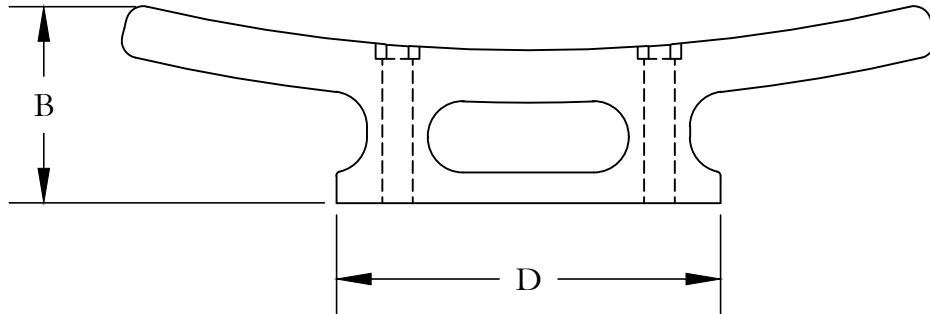
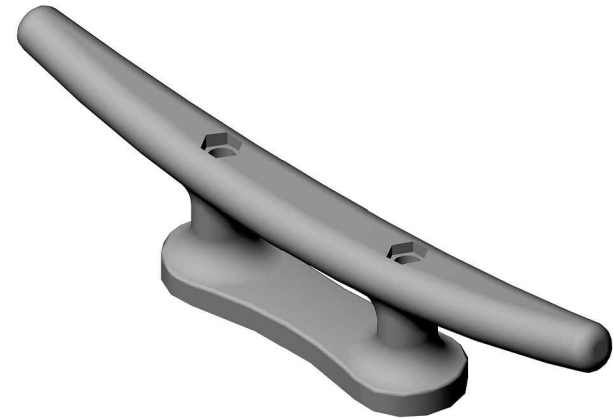
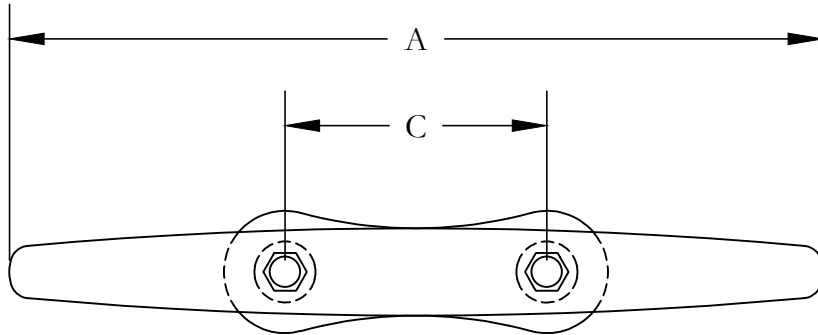


NOTE: ON LAYOUT DRAWINGS ALL MEASUREMENTS ARE TO THE FRAME MEMBERS. ACTUAL MEASUREMENTS MAY VARY BASED ON RUBRAIL, BUMPSBOARD, OR OTHER ACCESSORIES BEING USED. IF USING RUBRAIL ADD APPROX. 1/2". IF USING BUMPSBOARD ADD 1/4". THIS WILL AFFECT DISTANCE BETWEEN FINGERS BY -6". ON HINGE CONNECTIONS: ADD 3/4" BETWEEN SECTIONS FOR EVERY HINGE POINT. ALL OF THE ABOVE IS NOT CALCULATED IN ANY LAYOUT DRAWING. THIS DRAWING IS PROVIDED AS A COURTESY TO OUR CUSTOMERS. NON CUSTOMERS WILL BE CHARGED A SERVICE FEE OF \$75.00 AN HOUR. EFFECTIVE 1-20-2012



| | A | B | C | D | Bolt Size | Weight |
|-------|-----|--------|---------|----------|-----------|--------|
| C-10M | 10" | 3-1/2" | 2-1/2" | 4-13/16" | 1/2" Hex | 6# |
| C-12M | 12" | 3-3/4" | 3-7/16" | 7" | 5/8" Hex | 10# |

VISIT US ON THE WEB AT WWW.MERCOMARINE.COM

ALL DRAWINGS AND DETAILS ARE PROPERTY OF MERCO MARINE DO NOT COPY

MERCO MARINE
60 MERCO ROAD
WELLSBURG, WV 26070
PHONE: (800)396-3726
FAX: (304)737-3008



| | | | | | |
|-------------|------------------|---------------|-----------|---------------|----------|
| TITLE: | C-10-12M | | SCALE: | 6' = 1'-0" | |
| PRINT DATE: | 11/29/12 2:52 PM | CREATED DATE: | 11/29/12 | DRAWN BY: | DAN OTTO |
| | | | APRVD BY: | J. MERIWETHER | |